



NEW MARKETS
TAX CREDIT COALITION



NEW MARKETS TAX CREDIT New Member Briefing Report Senator Mike Braun


Indiana

nmtccoalition.org

A report on the loans and investments in Indiana.
Above: The Erskine Green Training Institute in Muncie

NMTC IMPACT IN INDIANA

JOBS AND INVESTMENT




9.6K

JOBS STATEWIDE

The NMTC created 9,594 Indiana jobs, including:


- 2,581 construction jobs;
- 7,013 full-time-equivalent jobs.



54

PROJECTS FINANCED IN INDIANA

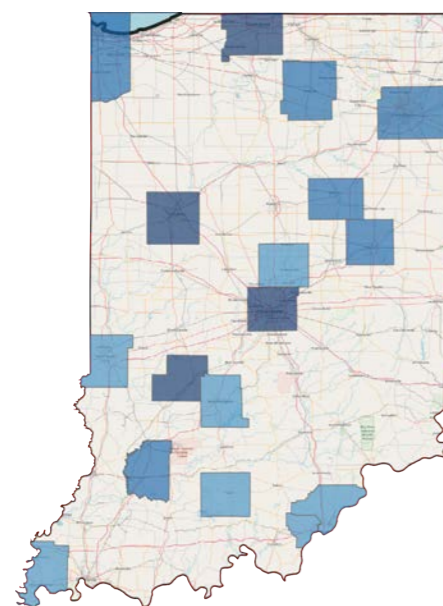
The NMTC made 54 Indiana projects possible, including manufacturing expansions, business incubators, hospitals, vocational training centers, and daycare centers.



\$704M

IN TOTAL CAPITAL TO INDIANA

The NMTC delivered \$704.2 million to Indiana businesses and revitalization projects that would not have been possible but-for the NMTC.



NMTC Investment by County 2003-2018

- \$0 - \$100,000
- \$100,000 - \$250,000
- \$250,000 - \$500,000
- \$500,000 - \$1,000,000
- \$1,000,000 - \$10,000,000
- \$10,000,000 - \$50,000,000
- \$50,000,000+

Through September 30, 2018

INDIANA PROJECT EXAMPLES



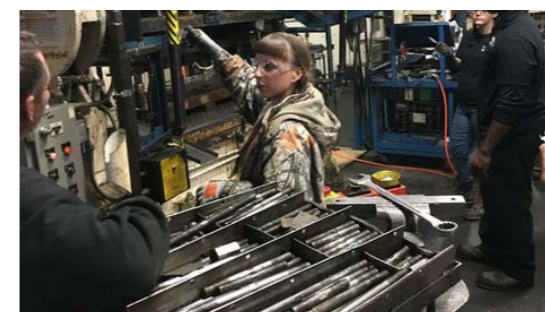
Erskine Green Training Institute Muncie, IN

A training institute and teaching hotel where people with disabilities can participate in a postsecondary education opportunity in hospitality, food service or healthcare. The institute trains an estimated 200 people from the state of Indiana each year. Students reside in the hotel for the duration of their training.



Lafayette YMCA Lafayette, IN

Financing for a 120,000 sq. ft. YMCA facility that provides recreational, wellness, primary healthcare, workforce development, and child care services. The Y is located within walking distance from the Ivy Tech community college.



Studebaker Innovation Center South Bend, IN

Adaptive reuse of a former Studebaker automobile manufacturing facility into office, education, incubator, advanced manufacturing and training space. The redevelopment of 220,000 sq. ft. of the nearly million square foot campus is estimated to create in excess of 400 permanent jobs.



Northend Community Center Lafayette, IN

A multi-facility, faith-based community center campus located in Lafayette, Indiana. In addition to reviving a blighted six-acre parcel, the new 97,000 sq. ft. campus provides operating space across three-structures for 11 community partners which offer programs and services for at-risk and underserved populations in and around north Lafayette.

ABOUT THE NMTC

AFTER DECADES OF CUTS TO COMMUNITY DEVELOPMENT GRANT PROGRAMS, COMMUNITIES INCREASINGLY COUNT ON THE NEW MARKETS TAX CREDIT TO MAKE IMPORTANT INVESTMENTS POSSIBLE

The New Markets Tax Credit (NMTC) is an important source of financing for businesses and community facilities in America's most distressed rural and urban communities. Congress authorized the NMTC in 2000 to bring down the cost of capital in communities outside of the economic mainstream. Taxpayers receive a 39 percent tax credit (taken over seven years) for qualified investments into Community Development Entities (CDEs), organizations with a track record of loans and investments in underserved areas. CDEs use the proceeds of those investments to finance business expansions, community facilities, and other projects prioritized by communities.

ECONOMIC IMPACT

CREATING JOBS

The NMTC has delivered \$80 billion total project financing to over 5,000 projects, creating 1,000,000 jobs at a cost to the federal government of less than \$20,000 per job.

JUMP-STARTING MANUFACTURING

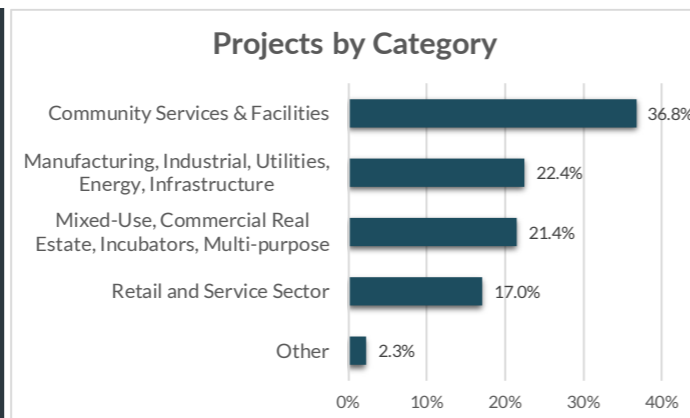
From the outfitting of maker-spaces to the construction of large plants, the NMTC provides nearly \$1 billion annually to manufacturing & industrial facilities.

ENHANCING SERVICES

Over one-third of NMTC financing goes to YMCAs, hospitals, childcare centers, nonprofits, arts & cultural amenities, & other facilities vital to healthy communities.

INDEPENDENT EVALUATION

An independent compliance review by Summit Consulting found that program participants are significantly lowering the cost of capital for borrowers in low-income communities and exceeding statutory and regulatory requirements for the targeting of economic distress.



EXTENSION LEGISLATION

The NMTC expires December 31, 2019. Without the NMTC, hard-hit communities will lose access to billions of dollars for high-impact projects.

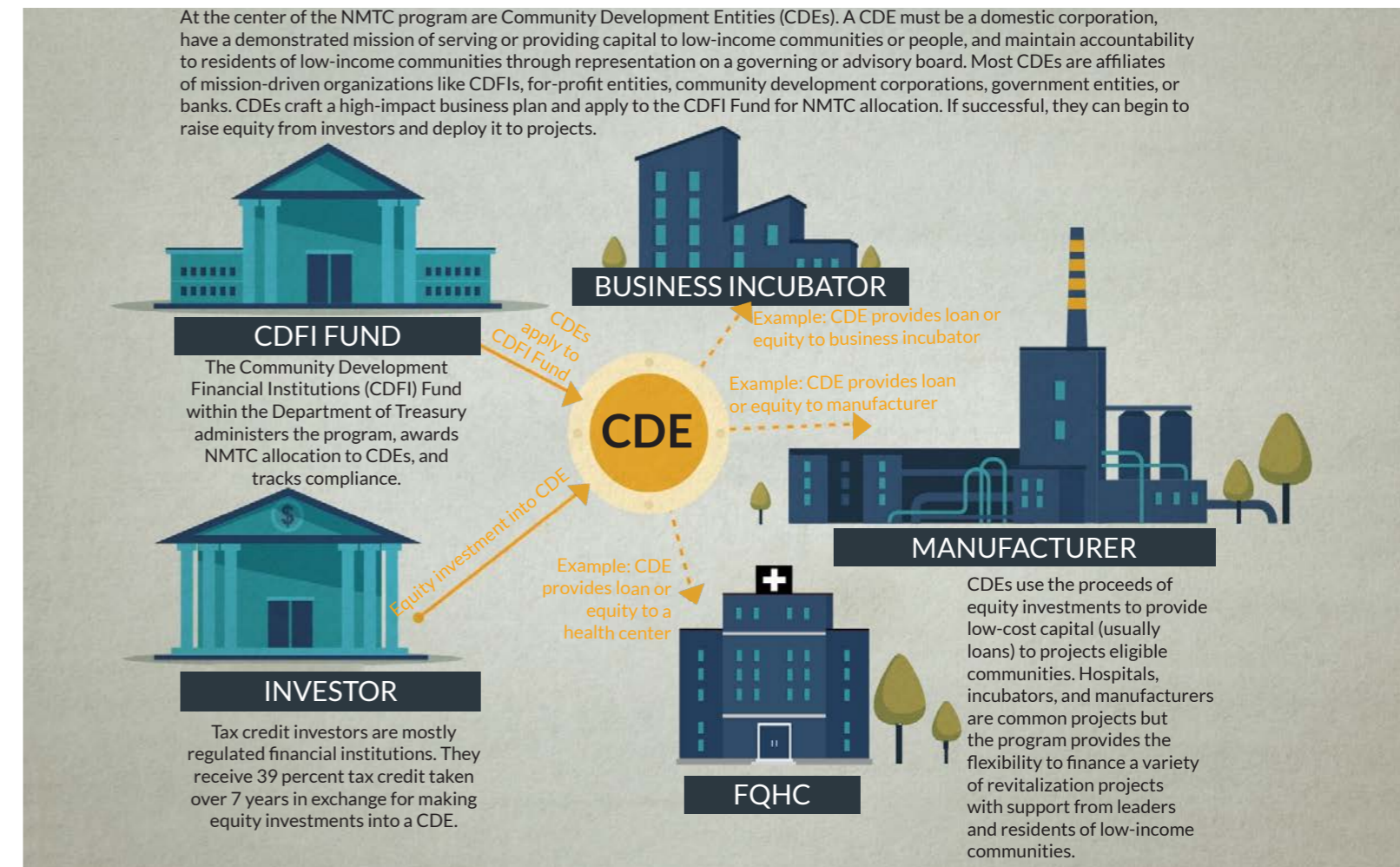
Extension legislation has been introduced by Sens. Roy Blunt (R-MO) and Ben Cardin (D-MD) in the Senate and Reps. Terri Sewell (D-AL) and Tom Reed (R-NY) in the House. **The New Markets Tax Credit Extension Act of 2019 (H.R. 1680/S. 750).**

The legislation would: provide an indefinite extension to the NMTC; increase allocation authority, adjusted for inflation; improve tax credit pricing and expand the investor-base by providing AMT relief to NMTC investors

In the 115th Congress, 123 members of the House and Senate from both parties cosponsored the NMTC Extension Act of 2017 (S. 384 and H.R. 1098).

HOW IT WORKS

MOBILIZING CAPITAL FOR HIGH-IMPACT PROJECTS



ELIGIBLE COMMUNITIES

NMTC projects must be located in census tracts with poverty rates of at least 20 percent or median incomes at or below 20 percent of the area median. However...

75% of NMTC projects are located in **severely distressed communities** that far exceed the statutory requirements for distress.

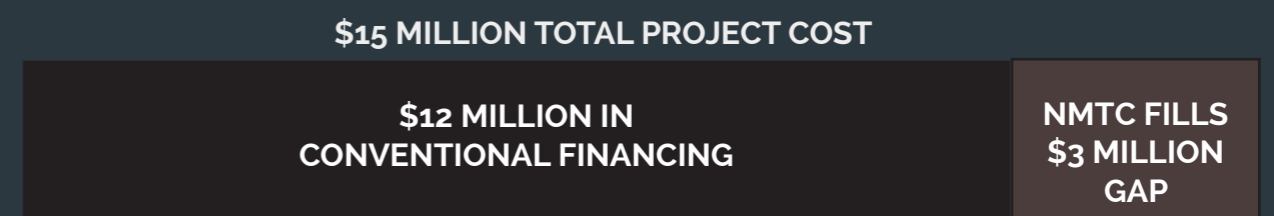
WHAT ABOUT RURAL?

The NMTC statute directs the CDFI Fund to ensure NMTC allocation reaches a proportional share of non-metropolitan counties.

23% of NMTC projects were located in non-metropolitan counties in 2017.

GAP FINANCING

Example: Imagine a business needs \$15 million to expand a production facility and purchase new equipment to meet growing demand. The business can only come up with \$12 million from a conventional lender. The NMTC fills the gap and makes the expansion possible.



ONLINE RESOURCES

NMTC Coalition:	nmtccoalition.org
State Fact Sheets:	nmtccoalition.org/state-fact-sheets
Project Maps	nmtccoalition.org/map
Project Profiles:	nmtccoalition.org/stories
How It Works Video:	nmtccoalition.org/how-it-works
Research:	nmtccoalition.org/research
Statute:	nmtccoalition.org/statute
 CDFI Fund:	 cdfifund.gov



NEW MARKETS TAX CREDIT COALITION

1155 15th Street Northwest
Suite 400
Washington, DC 20005

+1-202-204-4500
info@nmtccoalition.org
[@nmtccoalition](https://www.instagram.com/nmtccoalition)