



NEW MARKETS
TAX CREDIT COALITION



NEW MARKETS TAX CREDIT New Member Briefing Report Congressman Andy Levin

MI-09

nmtccoalition.org

A report on the loans and investments in Michigan's 9th CD and beyond
Above: Construction underway at HAVEN's new shelter in Pontiac, MI, nearby the 9th

NMTC IMPACT IN MICHIGAN

JOBS AND INVESTMENT

—now—
HIRING **29K**
JOBS STATEWIDE

The NMTC created 29,097 Michigan jobs, including:

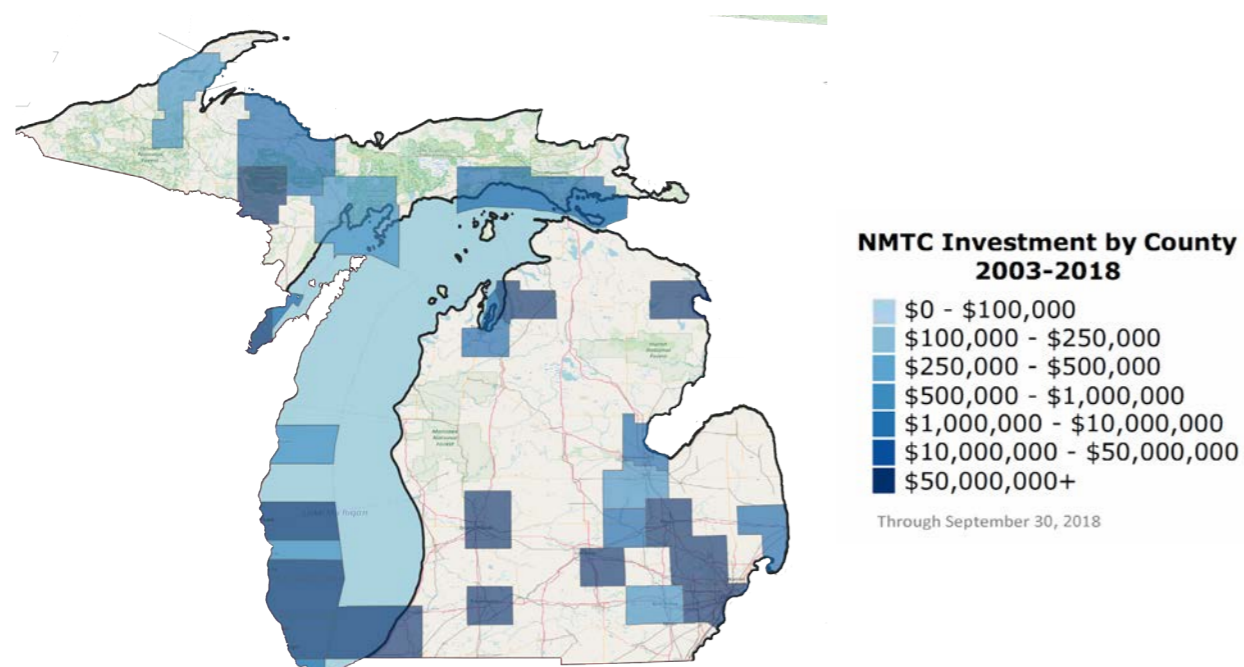
- 13,484 construction jobs;
- 15,613 full-time-equivalent jobs.

106
PROJECTS FINANCED IN MICHIGAN

The NMTC made 106 Michigan projects possible, including manufacturing expansions, business incubators, hospitals, vocational training centers, and daycare centers.

\$2.4B
IN TOTAL CAPITAL TO MICHIGAN

The NMTC delivered \$2.4 billion to Michigan businesses and revitalization projects that would not have been possible but-for the NMTC.



NMTC IMPACT IN MI-09

PROJECT EXAMPLES



HAVEN
Pontiac, MI (nearby the district)

HAVEN has served the Pontiac community for nearly 40 years, working to eliminate domestic violence and sexual assault across Oakland County and surrounding communities. As the only comprehensive treatment and prevention center, HAVEN helps and educates more than 30,000 people each year. The new center will be based on the Family Justice Center, a model that was pioneered in San Diego in 2002 and provides a central location for the services victims need.

The NMTC helped finance new facility for HAVEN in Pontiac near the district's border.



Gateway Park
North Detroit, MI (nearby the district)

When it opened in 2013, the Gateway Marketplace, a 361,000 sq. ft. retail center anchored by a grocery store, was the first major retail project within the City of Detroit in more than 40 years. The Gateway Marketplace provides healthy food options to the local residents, creates hundreds of jobs, and eliminates a Brownfield site. The project is on the edge of the 9th district, just south of Ferndale.

ABOUT THE NMTC

AFTER DECADES OF CUTS TO COMMUNITY DEVELOPMENT GRANT PROGRAMS, COMMUNITIES INCREASINGLY COUNT ON THE NEW MARKETS TAX CREDIT TO MAKE IMPORTANT INVESTMENTS POSSIBLE

The New Markets Tax Credit (NMTC) is an important source of financing for businesses and community facilities in America's most distressed rural and urban communities. Congress authorized the NMTC in 2000 to bring down the cost of capital in communities outside of the economic mainstream. Taxpayers receive a 39 percent tax credit (taken over seven years) for qualified investments into Community Development Entities (CDEs), organizations with a track record of loans and investments in underserved areas. CDEs use the proceeds of those investments to finance business expansions, community facilities, and other projects prioritized by communities.

ECONOMIC IMPACT

CREATING JOBS

The NMTC has delivered \$80 billion total project financing to over 5,000 projects, creating 1,000,000 jobs at a cost to the federal government of less than \$20,000 per job.

JUMP-STARTING MANUFACTURING

From the outfitting of maker-spaces to the construction of large plants, the NMTC provides nearly \$1 billion annually to manufacturing & industrial facilities.

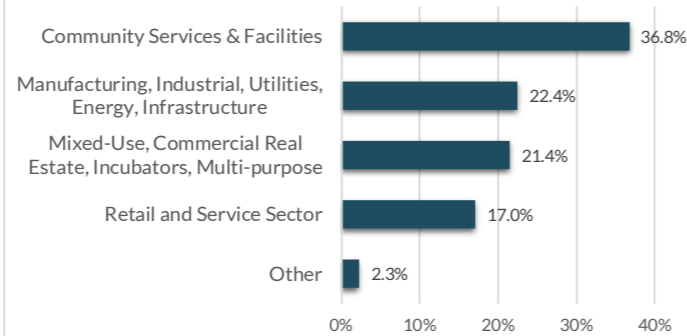
ENHANCING SERVICES

Over one-third of NMTC financing goes to YMCAs, hospitals, childcare centers, nonprofits, arts & cultural amenities, & other facilities vital to healthy communities.

INDEPENDENT EVALUATION

An independent compliance review by Summit Consulting found that program participants are significantly lowering the cost of capital for borrowers in low-income communities and exceeding statutory and regulatory requirements for the targeting of economic distress.

Projects by Category



EXTENSION LEGISLATION

The NMTC expires December 31, 2019. Without the NMTC, hard-hit communities will lose access to billions of dollars for high-impact projects.

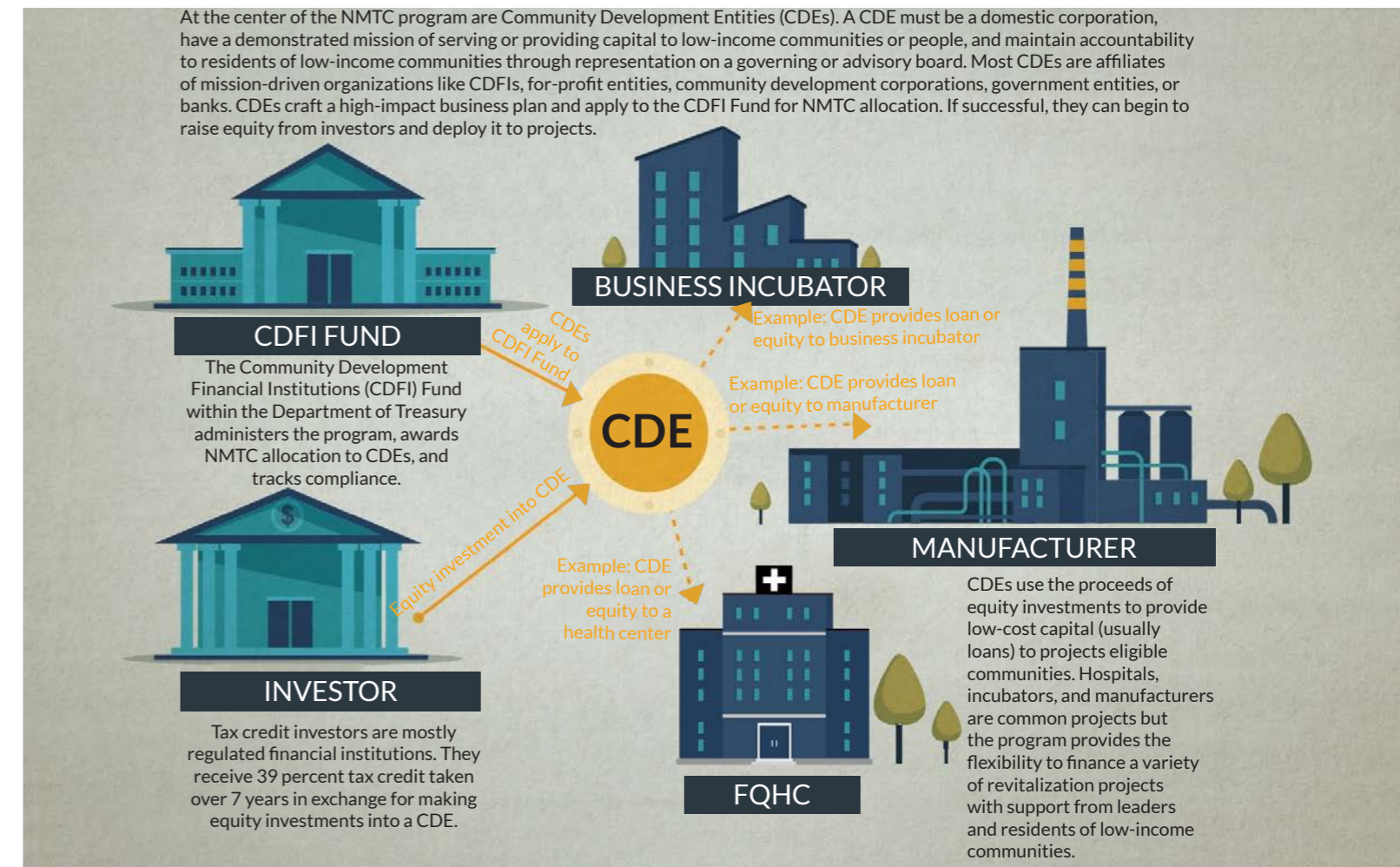
Extension legislation has been introduced by Sens. Roy Blunt (R-MO) and Ben Cardin (D-MD) in the Senate and Reps. Terri Sewell (D-AL) and Tom Reed (R-NY) in the House. **The New Markets Tax Credit Extension Act of 2019 (H.R. 1680/S. 750).**

The legislation would: provide an indefinite extension to the NMTC; increase allocation authority, adjusted for inflation; improve tax credit pricing and expand the investor-base by providing AMT relief to NMTC investors

In the 115th Congress, 123 members of the House and Senate from both parties cosponsored the NMTC Extension Act of 2017 (S. 384 and H.R. 1098).

HOW IT WORKS

MOBILIZING CAPITAL FOR HIGH-IMPACT PROJECTS



ELIGIBLE COMMUNITIES

NMTC projects must be located in census tracts with poverty rates of at least 20 percent or median incomes at or below 20 percent of the area median. However...

75% of NMTC projects are located in *severely distressed communities* that far exceed the statutory requirements for distress.

WHAT ABOUT RURAL?

The NMTC statute directs the CDFI Fund to ensure NMTC allocation reaches a proportional share of non-metropolitan counties.

23% of NMTC projects were located in non-metropolitan counties in 2017.

GAP FINANCING

Example: Imagine a business needs \$15 million to expand a production facility and purchase new equipment to meet growing demand. The business can only come up with \$12 million from a conventional lender. The NMTC fills the gap and makes the expansion possible.

\$15 MILLION TOTAL PROJECT COST

\$12 MILLION IN CONVENTIONAL FINANCING

NMTC FILLS \$3 MILLION GAP

ONLINE RESOURCES

| | |
|------------------------|--|
| NMTC Coalition: | nmtccoalition.org |
| State Fact Sheets: | nmtccoalition.org/state-fact-sheets |
| Project Maps | nmtccoalition.org/map |
| Project Profiles: | nmtccoalition.org/stories |
| How It Works Video: | nmtccoalition.org/how-it-works |
| Research: | nmtccoalition.org/research |
| Statute: | nmtccoalition.org/statute |
| CDFI Fund: | cdfifund.gov |



Above: A rendering of HAVEN's new Pontiac facility

NEW MARKETS TAX CREDIT COALITION

1155 15th Street Northwest
Suite 400
Washington, DC 20005

+1-202-204-4500
info@nmtccoalition.org
[@nmtccoalition](https://www.instagram.com/nmtccoalition)