



NEW MARKETS TAX CREDIT New Member Briefing Report Senator Kevin Cramer

North Dakota

nmtccoalition.org

A report on the loans and investments in North Dakota
Above: Fargo Family Healthcare's new facility.

NMTC IMPACT IN NORTH DAKOTA

JOBS AND INVESTMENT



1.2K

JOBS STATEWIDE

The NMTC created 1,210 North Dakota jobs, including:

- 312 construction jobs;
- 898 full-time-equivalent jobs.



8

PROJECTS FINANCED IN NORTH DAKOTA

The NMTC made 8 North Dakota projects possible, including manufacturing expansions, health centers, and other community facilities.



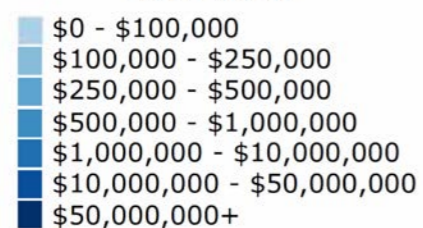
\$81M

IN TOTAL CAPITAL TO NORTH DAKOTA

The NMTC delivered \$81.4 million to North Dakota businesses and revitalization projects that would not have been possible but-for the NMTC.



NMTC Investment by County 2003-2018



Through September 30, 2018

NORTH DAKOTA PROJECT EXAMPLES



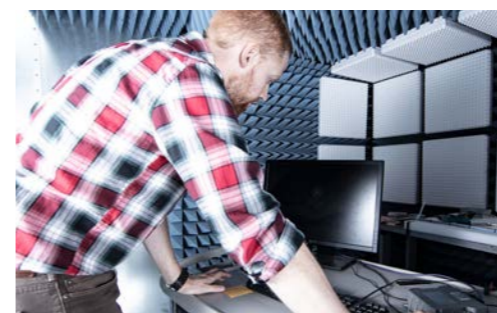
Minnewaukan Public Schools Wahpeton, ND

The Minnewaukan Public School District has a new school for its kindergarten through 12th grade students thanks in part to the NMTC. The old school building was continuously threatened by flooding from the adjacent Devils Lake and was inadequate to meet the needs of the student body. The new building is safe from floodwaters and provides new classrooms, a cafeteria, recreational areas and common spaces.



Fargo Family Healthcare Center Fargo, ND

The transformation of an old auto factory into a polished clinic and medical office space allowed Fargo Family Healthcare to expand its healthcare services. "The new clinic site will double our existing space and give us the capacity to provide affordable primary health care to more patients in Fargo-Moorhead and the surrounding areas," said Patricia Patrón, the center's executive director.



NDSU Research & Technology Park Fargo, ND

A North Dakota State University research hub to serve as a catalyst for innovation in science and technology leading to discoveries that contribute to North Dakota's economic development.



International Market Plaza: Immigrant Development Center Fargo, ND

Indoor public market focused on recent African immigrants. The IMP gives immigrants of the Fargo-Moorhead community the opportunity to pursue their passions and attain a better quality of life through their businesses. The facility provides entrepreneurship training, microloans, and other support for immigrant entrepreneurs chasing the American dream.

ABOUT THE NMTC

AFTER DECADES OF CUTS TO COMMUNITY DEVELOPMENT GRANT PROGRAMS, COMMUNITIES INCREASINGLY COUNT ON THE NEW MARKETS TAX CREDIT TO MAKE IMPORTANT INVESTMENTS POSSIBLE

The New Markets Tax Credit (NMTC) is an important source of financing for businesses and community facilities in America's most distressed rural and urban communities. Congress authorized the NMTC in 2000 to bring down the cost of capital in communities outside of the economic mainstream. Taxpayers receive a 39 percent tax credit (taken over seven years) for qualified investments into Community Development Entities (CDEs), organizations with a track record of loans and investments in underserved areas. CDEs use the proceeds of those investments to finance business expansions, community facilities, and other projects prioritized by communities.

ECONOMIC IMPACT

CREATING JOBS

The NMTC has delivered \$80 billion total project financing to over 5,000 projects, creating 1,000,000 jobs at a cost to the federal government of less than \$20,000 per job.

JUMP-STARTING MANUFACTURING

From the outfitting of maker-spaces to the construction of large plants, the NMTC provides nearly \$1 billion annually to manufacturing & industrial facilities.

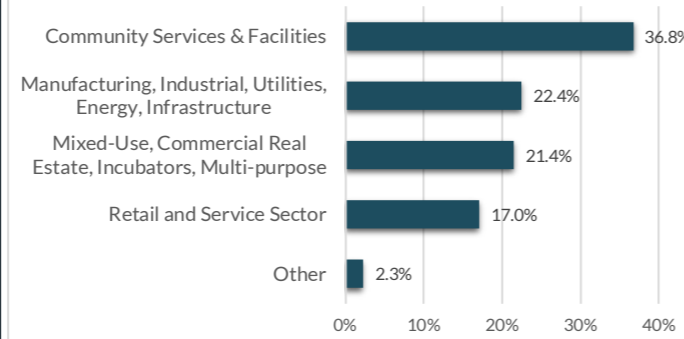
ENHANCING SERVICES

Over one-third of NMTC financing goes to YMCAs, hospitals, childcare centers, nonprofits, arts & cultural amenities, & other facilities vital to healthy communities.

INDEPENDENT EVALUATION

An independent compliance review by Summit Consulting found that program participants are significantly lowering the cost of capital for borrowers in low-income communities and exceeding statutory and regulatory requirements for the targeting of economic distress.

Projects by Category



EXTENSION LEGISLATION

The NMTC expires December 31, 2019. Without the NMTC, hard-hit communities will lose access to billions of dollars for high-impact projects.

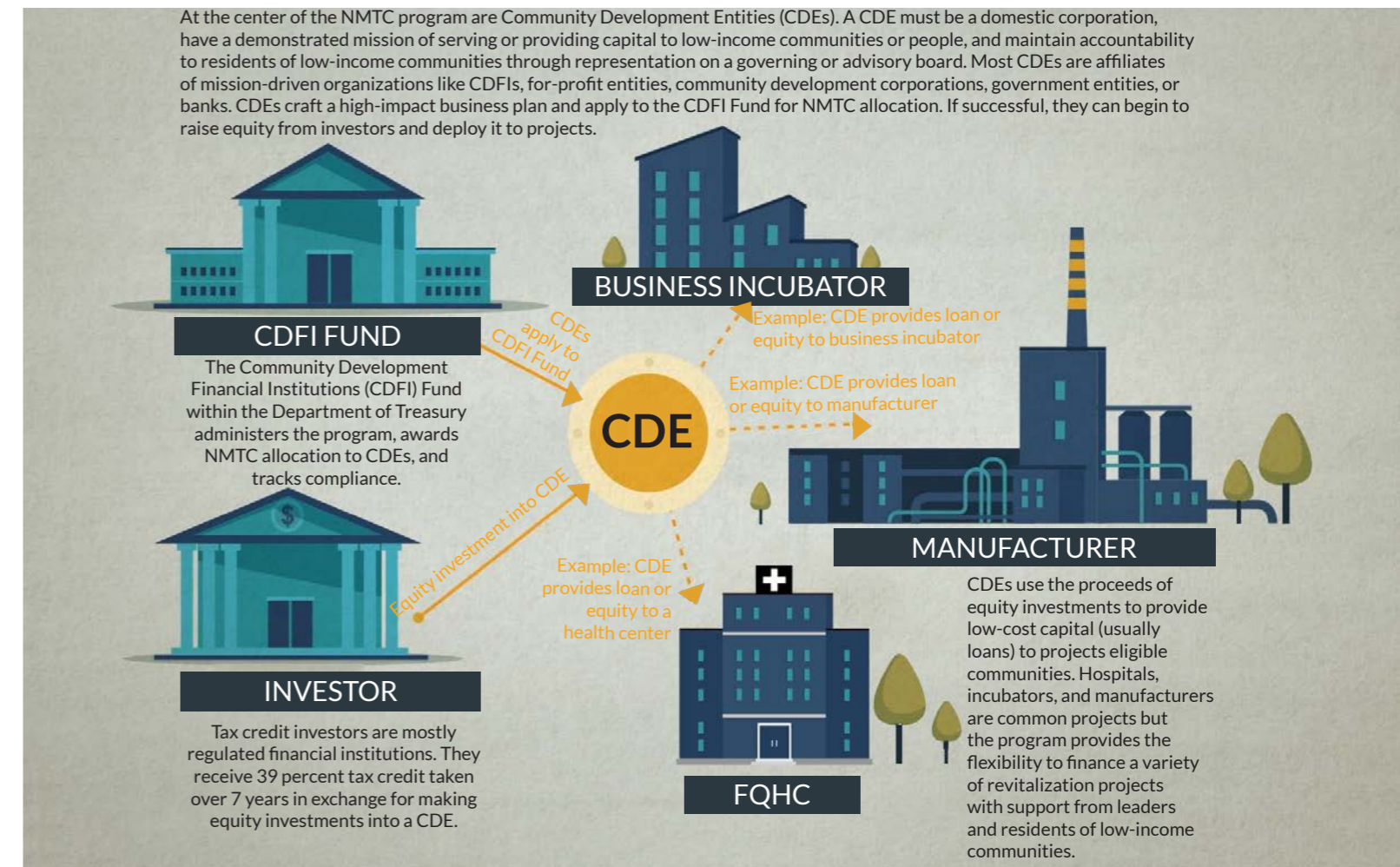
Extension legislation has been introduced by Sens. Roy Blunt (R-MO) and Ben Cardin (D-MD) in the Senate and Reps. Terri Sewell (D-AL) and Tom Reed (R-NY) in the House. **The New Markets Tax Credit Extension Act of 2019 (H.R. 1680/S. 750).**

The legislation would: provide an indefinite extension to the NMTC; increase allocation authority, adjusted for inflation; improve tax credit pricing and expand the investor-base by providing AMT relief to NMTC investors

In the 115th Congress, 123 members of the House and Senate from both parties cosponsored the NMTC Extension Act of 2017 (S. 384 and H.R. 1098).

HOW IT WORKS

MOBILIZING CAPITAL FOR HIGH-IMPACT PROJECTS



ELIGIBLE COMMUNITIES

NMTC projects must be located in census tracts with poverty rates of at least 20 percent or median incomes at or below 20 percent of the area median. However...

75% of NMTC projects are located in **severely distressed communities** that far exceed the statutory requirements for distress.

WHAT ABOUT RURAL?

The NMTC statute directs the CDFI Fund to ensure NMTC allocation reaches a proportional share of non-metropolitan counties.

23% of NMTC projects were located in non-metropolitan counties in 2017.

GAP FINANCING

Example: Imagine a business needs \$15 million to expand a production facility and purchase new equipment to meet growing demand. The business can only come up with \$12 million from a conventional lender. The NMTC fills the gap and makes the expansion possible.

\$15 MILLION TOTAL PROJECT COST

\$12 MILLION IN CONVENTIONAL FINANCING

NMTC FILLS \$3 MILLION GAP

ONLINE RESOURCES

NMTC Coalition:	nmtccoalition.org
State Fact Sheets:	nmtccoalition.org/state-fact-sheets
Project Maps	nmtccoalition.org/map
Project Profiles:	nmtccoalition.org/stories
How It Works Video:	nmtccoalition.org/how-it-works
Research:	nmtccoalition.org/research
Statute:	nmtccoalition.org/statute
 CDFI Fund:	 cdfifund.gov



Above: A rendering of the International Market Plaza's Immigrant Development Center in Fargo, ND.

NEW MARKETS TAX CREDIT COALITION

1155 15th Street Northwest
Suite 400
Washington, DC 20005

+1-202-204-4500
info@nmtccoalition.org
[@nmtccoalition](https://www.instagram.com/nmtccoalition)