



NEW MARKETS
TAX CREDIT COALITION

NEW MARKETS TAX CREDIT New Member Briefing Report Congresswoman Mikie Sherrill

NJ-11

nmtccoalition.org

Above: Accurate Box cuts the ribbon on their expansion that brought 50 jobs to Paterson, just outside of NJ-11.

NMTC IMPACT IN NEW JERSEY

JOBS AND INVESTMENT



30K

JOBS STATEWIDE

The NMTC created 30,412 New Jersey jobs, including:

- 12,781 construction jobs;
- 17,631 full-time-equivalent jobs.



105

PROJECTS FINANCED IN NEW JERSEY

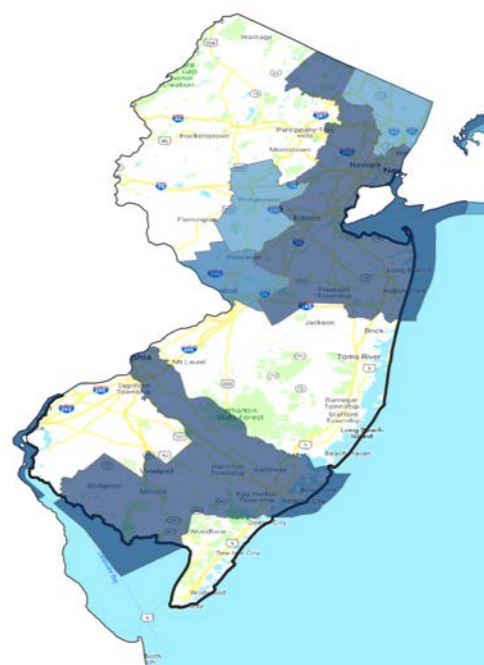
The NMTC made 105 New Jersey projects possible, including manufacturing expansions, business incubators, hospitals, vocational training centers, and daycare centers.



\$2.8B

IN TOTAL CAPITAL TO NEW JERSEY

The NMTC delivered \$2.8 billion to New Jersey businesses and revitalization projects that would not have been possible but-for the NMTC.



NMTC Investment by County 2003-2018

- \$0 - \$100,000
- \$100,000 - \$250,000
- \$250,000 - \$500,000
- \$500,000 - \$1,000,000
- \$1,000,000 - \$10,000,000
- \$10,000,000 - \$50,000,000
- \$50,000,000+

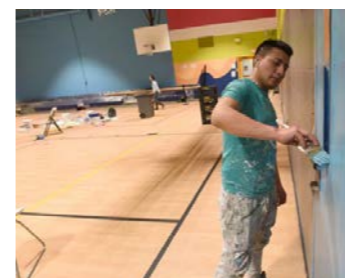
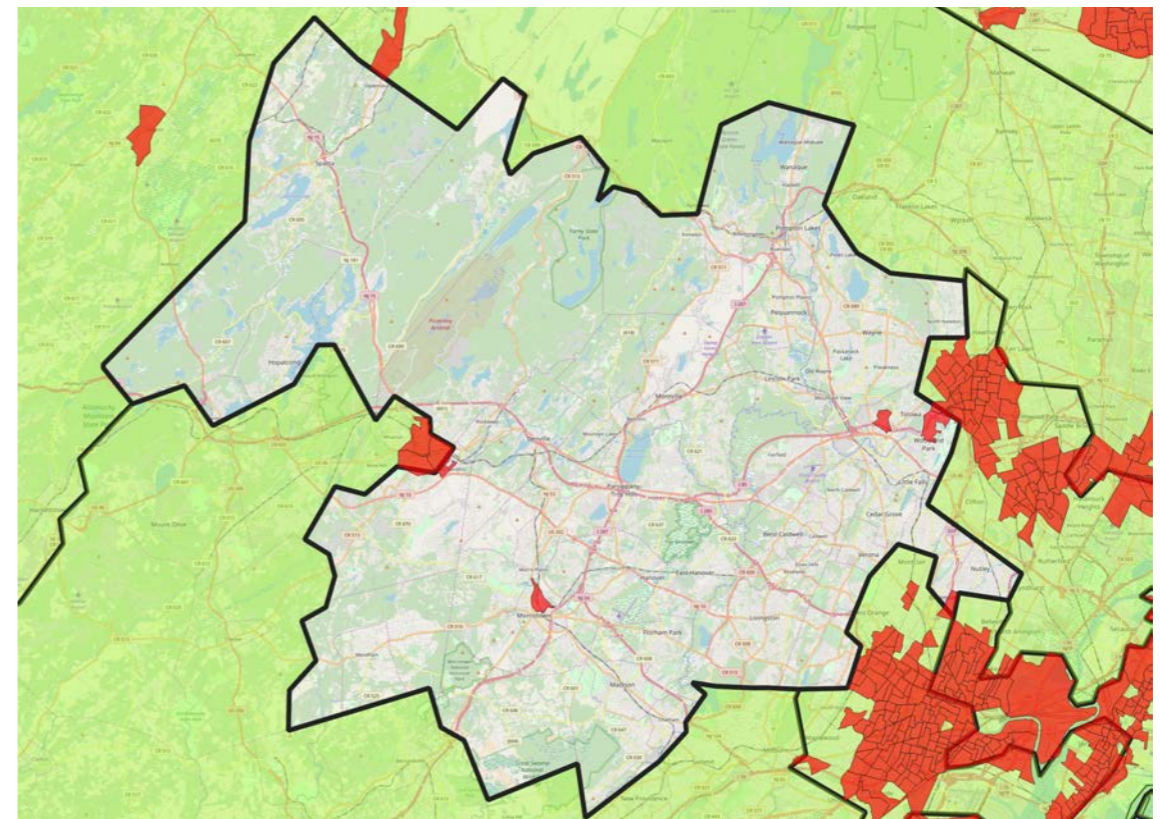
Through September 30, 2018

NMTC IMPACT IN NJ-11

PROJECT EXAMPLES

NMTC Eligible Areas

Because much of the 11th district is fairly affluent, there are few eligible census tracts. But there are a good deal of eligible tracts and NMTC projects in Paterson (see below) and Newark.



Boys and Girls Clubs of Paterson and Passaic
Paterson and Passaic, NJ
The NMTC financed the renovation and expansion of two Boys & Girls club facilities, one in Paterson and one in Passaic.



Accurate Box
Paterson, NJ
Accurate Box is a family, women-owned manufacturer of boxes with a commitment to one of the poorest communities in New Jersey. They used the NMTC to modernize and expand their factory, creating 50 jobs and saving another 250.



Doctors Subacute Care
Paterson, NJ
Healthcare facilities make up more than 10% of NMTC projects nationwide. The NMTC financed Doctors Subacute Care, a residential care facility in Paterson.

ABOUT THE NMTC

AFTER DECADES OF CUTS TO COMMUNITY DEVELOPMENT GRANT PROGRAMS, COMMUNITIES INCREASINGLY COUNT ON THE NEW MARKETS TAX CREDIT TO MAKE IMPORTANT INVESTMENTS POSSIBLE

The New Markets Tax Credit (NMTC) is an important source of financing for businesses and community facilities in America's most distressed rural and urban communities. Congress authorized the NMTC in 2000 to bring down the cost of capital in communities outside of the economic mainstream. Taxpayers receive a 39 percent tax credit (taken over seven years) for qualified investments into Community Development Entities (CDEs), organizations with a track record of loans and investments in underserved areas. CDEs use the proceeds of those investments to finance business expansions, community facilities, and other projects prioritized by communities.

ECONOMIC IMPACT

CREATING JOBS

The NMTC has delivered \$80 billion total project financing to over 5,000 projects, creating 1,000,000 jobs at a cost to the federal government of less than \$20,000 per job.

JUMP-STARTING MANUFACTURING

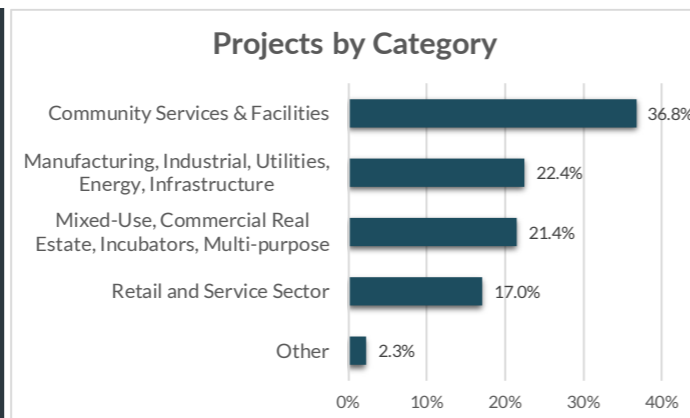
From the outfitting of maker-spaces to the construction of large plants, the NMTC provides nearly \$1 billion annually to manufacturing & industrial facilities.

ENHANCING SERVICES

Over one-third of NMTC financing goes to YMCAs, hospitals, childcare centers, nonprofits, arts & cultural amenities, & other facilities vital to healthy communities.

INDEPENDENT EVALUATION

An independent compliance review by Summit Consulting found that program participants are significantly lowering the cost of capital for borrowers in low-income communities and exceeding statutory and regulatory requirements for the targeting of economic distress.



EXTENSION LEGISLATION

The NMTC expires December 31, 2019. Without the NMTC, hard-hit communities will lose access to billions of dollars for high-impact projects.

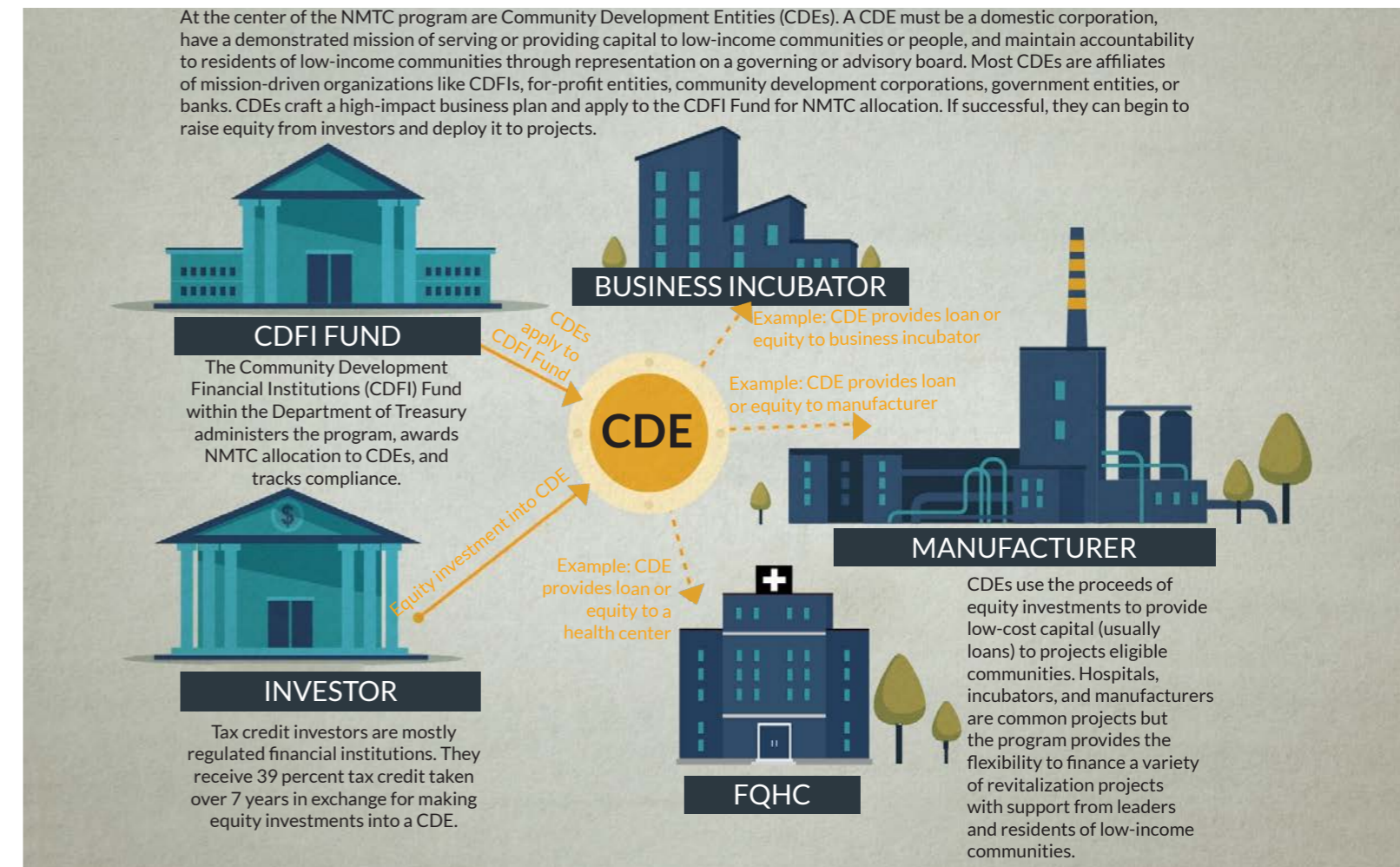
Extension legislation has been introduced by Sens. Roy Blunt (R-MO) and Ben Cardin (D-MD) in the Senate and Reps. Terri Sewell (D-AL) and Tom Reed (R-NY) in the House. **The New Markets Tax Credit Extension Act of 2019 (H.R. 1680/S. 750).**

The legislation would: provide an indefinite extension to the NMTC; increase allocation authority, adjusted for inflation; improve tax credit pricing and expand the investor-base by providing AMT relief to NMTC investors

In the 115th Congress, 123 members of the House and Senate from both parties cosponsored the NMTC Extension Act of 2017 (S. 384 and H.R. 1098).

HOW IT WORKS

MOBILIZING CAPITAL FOR HIGH-IMPACT PROJECTS



ELIGIBLE COMMUNITIES

NMTC projects must be located in census tracts with poverty rates of at least 20 percent or median incomes at or below 20 percent of the area median. However...

75% of NMTC projects are located in **severely distressed communities** that far exceed the statutory requirements for distress.

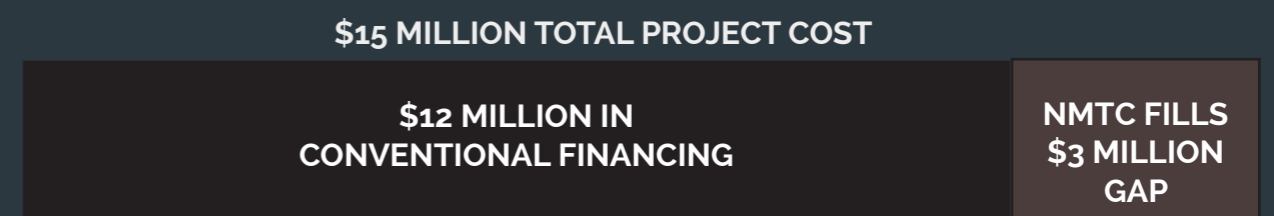
WHAT ABOUT RURAL?

The NMTC statute directs the CDFI Fund to ensure NMTC allocation reaches a proportional share of non-metropolitan counties.

23% of NMTC projects were located in non-metropolitan counties in 2017.

GAP FINANCING

Example: Imagine a business needs \$15 million to expand a production facility and purchase new equipment to meet growing demand. The business can only come up with \$12 million from a conventional lender. The NMTC fills the gap and makes the expansion possible.



ONLINE RESOURCES

NMTC Coalition:	nmtccoalition.org
State Fact Sheets:	nmtccoalition.org/state-fact-sheets
Project Maps	nmtccoalition.org/map
Project Profiles:	nmtccoalition.org/stories
How It Works Video:	nmtccoalition.org/how-it-works
Research:	nmtccoalition.org/research
Statute:	nmtccoalition.org/statute
CDFI Fund:	cdfifund.gov



Above: The Boys & Girls Club of Paterson (near NJ-11) was renovated thanks in part to financing from the NMTC.

NEW MARKETS TAX CREDIT COALITION

1155 15th Street Northwest
Suite 400
Washington, DC 20005

+1-202-204-4500
info@nmtccoalition.org
[@nmtccoalition](https://www.instagram.com/nmtccoalition)