



**NEW MARKETS** e USA ★ ★  
TAX CREDIT COALITION

A Treat for Dogs

**PRAIRIE DOG**  
**TREATS**

Smokehouse Selections

TURKEY

# NEW MARKETS TAX CREDIT Member Briefing Report Congressman Jodey Arrington

**TX-19**

[nmtcoalition.org](http://nmtcoalition.org)

A report on the loans and investments in Texas's 19th CD and beyond  
Above: One of many products offered by Prairie Dog Pet Products in Abilene, TX.

# NMTC IMPACT IN TEXAS

## JOBS AND INVESTMENT



**35K**

JOBS STATEWIDE

The NMTC created 34,727 Texas jobs, including:

- 13,036 construction jobs;
- 21,691 full-time-equivalent jobs.



**187**

PROJECTS FINANCED IN TEXAS

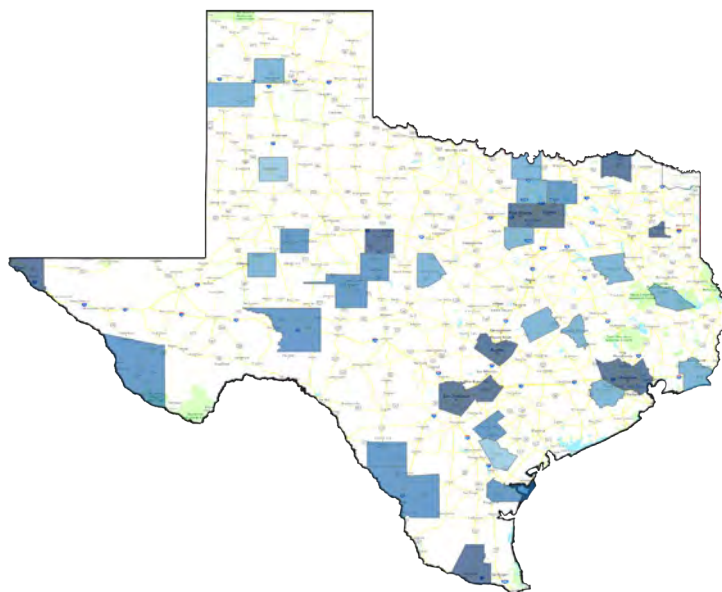
The NMTC made 187 Texas projects possible, including manufacturing expansions, business incubators, hospitals, vocational training centers, and daycare centers.



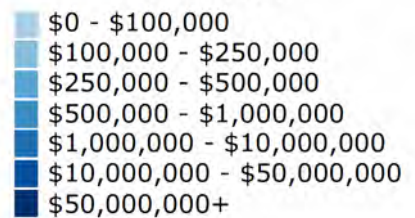
**\$2.9B**

IN TOTAL CAPITAL TO TEXAS

The NMTC delivered \$2.9 billion to Texas businesses and revitalization projects that would not have been possible but-for the NMTC.



**NMTC Investment by County  
2003-2018**



Through September 30, 2018

# NMTC IMPACT IN TX-19

## INVESTMENT AND PROJECT EXAMPLES



9

PROJECTS FINANCED IN TX-19

4 NMTC projects have been financed in Texas's 19th Congressional District.



\$136M

IN TOTAL CAPITAL IN TX-19

The NMTC delivered \$136 million in total capital to businesses and revitalization projects in Texas's 19th Congressional District.



### Abilene Revitalization Bolstered with \$24 Million in New Markets Tax Credits for Prairie Dog Pet Products Facility

Abilene, TX

The project transformed an unused 100,000 square-foot industrial building in Abilene's city-owned Five Points Business Park into a state-of-the-art facility supporting 215 full-time employees.



### Hendrick Medical Systems

Abilene, TX

Hendrick's School of Nursing is located in Abilene Texas. With the nation facing an ever worsening nursing shortage, PCDE, Texas Tech University and Hendrick Medical Systems, Inc have endeavored to build a new nursing school at the Texas Tech University Health Sciences Center (TTUHSC) in Abilene. A new 32,100 sq. ft. facility allows the degree programs to grow.

# ABOUT THE NMTC

AFTER DECADES OF CUTS TO COMMUNITY DEVELOPMENT GRANT PROGRAMS, COMMUNITIES INCREASINGLY COUNT ON THE NEW MARKETS TAX CREDIT TO MAKE IMPORTANT INVESTMENTS POSSIBLE

The New Markets Tax Credit (NMTC) is an important source of financing for businesses and community facilities in America's most distressed rural and urban communities. Congress authorized the NMTC in 2000 to bring down the cost of capital in communities outside of the economic mainstream. Taxpayers receive a 39 percent tax credit (taken over seven years) for qualified investments into Community Development Entities (CDEs), organizations with a track record of loans and investments in underserved areas. CDEs use the proceeds of those investments to finance business expansions, community facilities, and other projects prioritized by communities.

## ECONOMIC IMPACT



### CREATING JOBS

The NMTC has delivered \$80 billion total project financing to over 5,000 projects, creating 1,000,000 jobs at a cost to the federal government of less than \$20,000 per job.



### JUMP-STARTING MANUFACTURING

From the outfitting of maker-spaces to the construction of large plants, the NMTC provides nearly \$1 billion annually to manufacturing & industrial facilities.



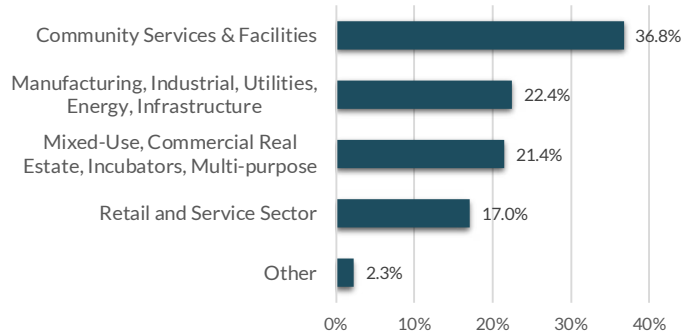
### ENHANCING SERVICES

Over one-third of NMTC financing goes to YMCAs, hospitals, childcare centers, nonprofits, arts & cultural amenities, & other facilities vital to healthy communities.

## INDEPENDENT EVALUATION

An independent compliance review by Summit Consulting found that program participants are significantly lowering the cost of capital for borrowers in low-income communities and exceeding statutory and regulatory requirements for the targeting of economic distress.

Projects by Category



## EXTENSION LEGISLATION

The NMTC expires December 31, 2019. Without the NMTC, hard-hit communities will lose access to billions of dollars for high-impact projects.

In the 115th Congress, 123 members of the House and Senate from both parties cosponsored the NMTC Extension Act of 2017 (S. 384 and H.R. 1098), which will be reintroduced soon.

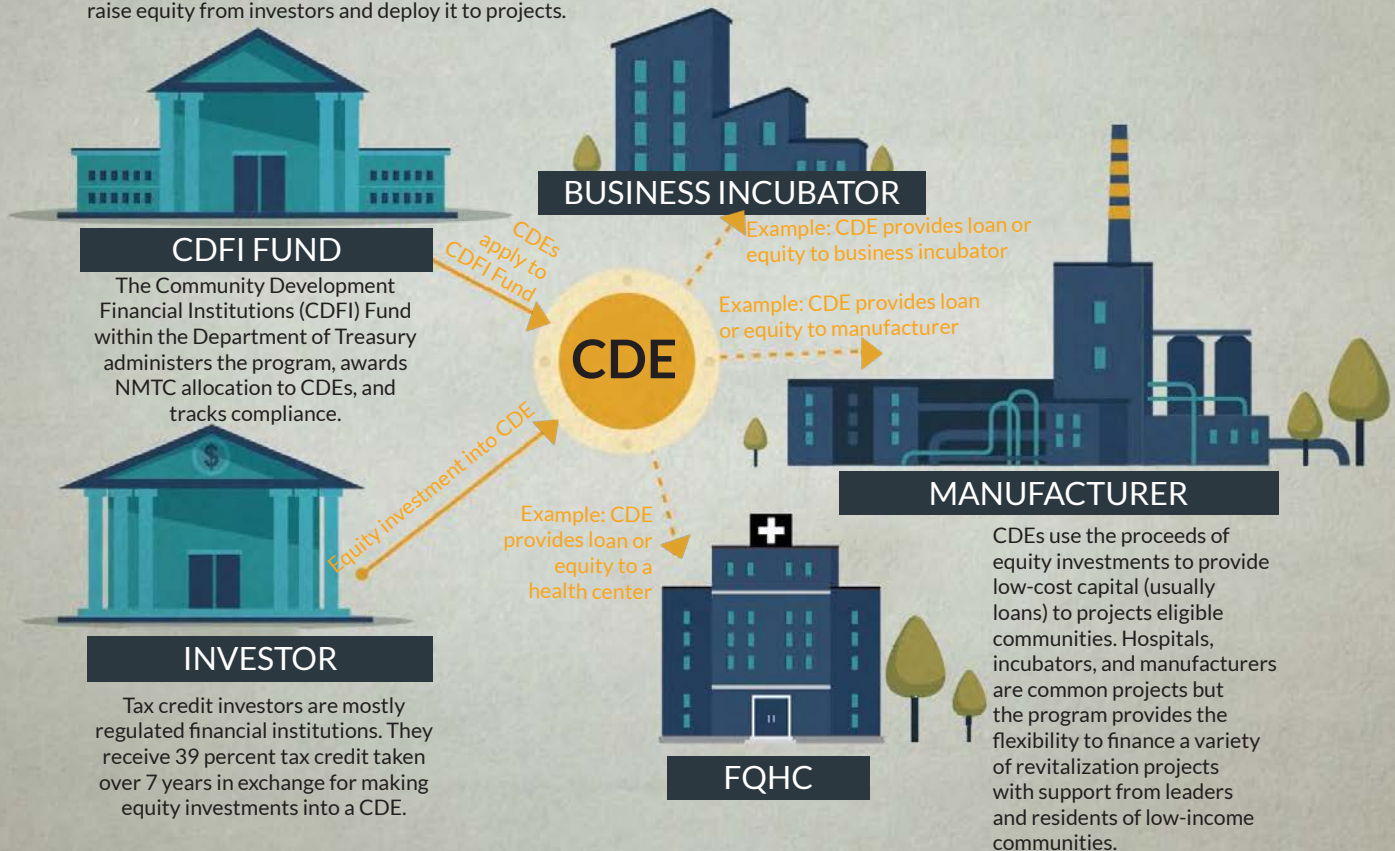
The legislation would: provide an indefinite extension to the NMTC; increase allocation authority, adjusted for inflation; improve tax credit pricing and expand the investor-base by providing AMT relief to NMTC investors

Check the NMTC Coalition's website for updates and more information on extension legislation in the 116th Congress: [nmtccoalition.org](http://nmtccoalition.org).

# HOW IT WORKS

## MOBILIZING CAPITAL FOR HIGH-IMPACT PROJECTS

At the center of the NMTC program are Community Development Entities (CDEs). A CDE must be a domestic corporation, have a demonstrated mission of serving or providing capital to low-income communities or people, and maintain accountability to residents of low-income communities through representation on a governing or advisory board. Most CDEs are affiliates of mission-driven organizations like CDFIs, for-profit entities, community development corporations, government entities, or banks. CDEs craft a high-impact business plan and apply to the CDFI Fund for NMTC allocation. If successful, they can begin to raise equity from investors and deploy it to projects.



### ELIGIBLE COMMUNITIES

NMTC projects must be located in census tracts with poverty rates of at least 20 percent or median incomes at or below 20 percent of the area median. However...

**75%** of NMTC projects are located in *severely distressed communities* that far exceed the statutory requirements for distress.

### WHAT ABOUT RURAL?

The NMTC statute directs the CDFI Fund to ensure NMTC allocation reaches a proportional share of non-metropolitan counties.

**23%** of NMTC projects were located in non-metropolitan counties in 2017.

### GAP FINANCING

Example: Imagine a business needs \$15 million to expand a production facility and purchase new equipment to meet growing demand. The business can only come up with \$12 million from a conventional lender. The NMTC fills the gap and makes the expansion possible.

**\$15 MILLION TOTAL PROJECT COST**

**\$12 MILLION IN  
CONVENTIONAL FINANCING**

**NMTC FILLS  
\$3 MILLION  
GAP**

# ONLINE RESOURCES

<b>NMTC Coalition:</b>	<a href="http://nmtccoalition.org">nmtccoalition.org</a>
State Fact Sheets:	<a href="http://nmtccoalition.org/state-fact-sheets">nmtccoalition.org/state-fact-sheets</a>
Project Maps	<a href="http://nmtccoalition.org/map">nmtccoalition.org/map</a>
Project Profiles:	<a href="http://nmtccoalition.org/stories">nmtccoalition.org/stories</a>
How It Works Video:	<a href="http://nmtccoalition.org/how-it-works">nmtccoalition.org/how-it-works</a>
Research:	<a href="http://nmtccoalition.org/research">nmtccoalition.org/research</a>
Statute:	<a href="http://nmtccoalition.org/statute">nmtccoalition.org/statute</a>
 <b>CDFI Fund:</b>	 <a href="http://cdfifund.gov">cdfifund.gov</a>



Above: Hendrick Medical Center in Abilene.

## NEW MARKETS TAX CREDIT COALITION

1155 15th Street Northwest  
Suite 400  
Washington, DC 20005

+1-202-204-4500  
[info@nmtccoalition.org](mailto:info@nmtccoalition.org)  
[@nmtccoalition](https://www.instagram.com/nmtccoalition)